



36 Cut Cells Monocrystalline PV Module



20 years Performance Guarantee
10-YEAR 90% Maximum Output
20-YEAR 80% Maximum Output



5 years Product Warranties
Leading product quality assurance



Positive tolerance
Positive tolerance of up to 5 W delivers higher output reliability



Excellent weak light performance
More power output in weak light condition, such as haze, cloudy and morning

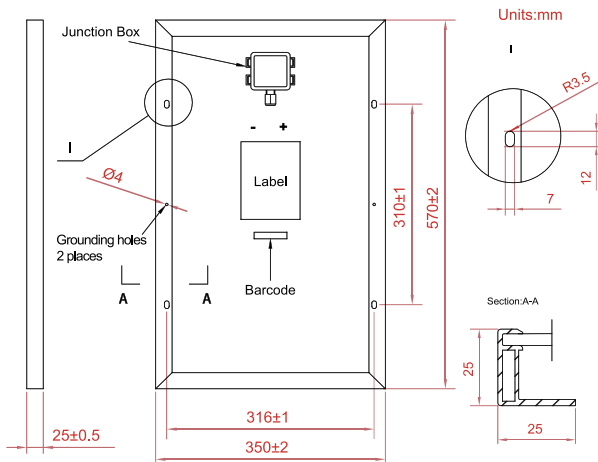


Certified to withstand
wind load (2400 Pascal) and snow load (5400 Pascal)



IEC61215 : 2016
IEC61730 : 2016

Engineering Drawings



Mechanical Specifications

External Dimensions	570*350*25mm
Weight	2.2kg
Solar Cells	monocrystalline 156.75*26.125 (36pcs)
Front Glass	3.2 mm tempered glass low iron
Frame	Anodized aluminum alloy
Junction Box	IP65
Output Cables	Optional
Connector	Optional
Mechanical Load	5400 Pa

Electrical Characteristics	CST030M6-12
Maximum Power - Pmax(W)	30
Open Circuit Voltage - Voc(V)	23.9
Short Circuit Current - Isc(A)	1.63
Voltage at Pmax-Vmp(V)	19.5
Current at Pmax-Imp(A)	1.54
Module Efficiency-ηm(%)	15.04
Safety factor	(0,+5)
Maximum System Voltage(V)	715
Maximum Series Fuse Rating(A)	10

STC: Irradiance 1000 W/m², module temperature 25 °C, AM=1.5;
Best in Class AAA solar simulator (IEC 60904-9) used, power measurement uncertainty is within +/- 3%

Packing Configuration

Piled pallet size	1500*1130*700mm
Gross weight per pallet	370 kg
Quantity per pallet	150 pcs
Quantity per 20 feet container	2100 pcs

Temperature Characteristics

Pmax Temperature Coefficient	-0.40%/°C
Voc Temperature Coefficient	-0.32%/°C
Isc Temperature Coefficient	+0.05%/°C
Operating Temperature	-40~85 °C
Nominal Operating Cell Temperature (NOCT)	45±2 °C